



Volume 2, Number 7

July 2018

The NMRA's *Turntable* is a monthly publication which, like a railroad turntable, will lead you in a number of directions on the internet.

This e-publication is a collection of railroad and model railroad videos, podcasts, websites, and/or other information freely available on the internet that we think may be of interest to you. The NMRA claims no ownership of this information, nor do we endorse its creators or their websites. The *NMRA Turntable* will not promote individuals or their for-profit ventures.

**NEW!** A Members-Only Exclusive Clinic

from Model Railroader Video Plus



## [The Log Blog Ep 16 - Sawmill Saga](#)

Looking for some scratchbuilding fun this summer? Try a sawmill! David Popp shares a sawmill project from his On30 Olympia logging layout. The mill is roughly based upon the steam-powered Philips Brothers mill built in California in 1933. David shares a lot of great modeling tips and techniques, and NMRA members can watch it for free this month on MRVideoPlus.com! But don't wait too long - the video will only be available until the next *Turntable* comes out in August.



3D Printed Water Tank - Model Railroad Scenery



Luke Towan

Subscribe 483K

85,688 views

### [3D Printed HO Water Tank](#)

Luke shows how he used a 3D printer to make an HO scale water tank.

**ALL MY ENGINES ARE SPEED MATCHED TO THE SAME SCALE SPEEDS REGARDLESS OF THE MAXIMUM SPEED OF THE PROTOTYPE ENGINE**



- 1) WARM UP THE ENGINE**
- 2) DETERMINE CURRENT SPEED PERFORMANCE**

Speed Matching DCC Model Railroad Train Engines with Accutrack Speedometer



Scale Model Trains & Colorado's Joint Line

Subscribe 18K

13,199 views

## [Speed Matching DCC Locos](#)

Using an Accutrack Speedometer and JMRI to Speed Match DCC Locos.



A look at touch controls for model railroad control panels!



Trackside Scenery

 **Subscribe** 9.5K

21,894 views

## [Touch Controls for a Control Panel](#)

The presenter shows how he created a model railroad control panel using touch switches to control turnouts.

**NMRA Clinics From Our Members-Only Collection**

**\*\*\* You will need to sign-in as a member to view these video clinics! \*\*\***

# Remote Dispatching: Across the Room or Across the World

Presented by Andrew Deak

2017 National Convention, Orlando, FL

Uploaded 10/8/17



## [Remote Dispatching](#)

A clinic from last year's Orange Blossom Special Convention presented by Andrew Deak on Remote Dispatching from across the room or across the world.

# Scratchbuilding Wooden Structures

Presented by John Giammasi

2017 National Convention, Orlando, FL

Uploaded: 10/8/17



## [Scratchbuilding Wooden Structures](#)

Another clinic from last year's Orange Blossom Special Convention, in this one John Giammasi explains his methods for building his scratchbuilt wooden structure models.


**Best of the Rest**



Track Lighting Railroad



Track Lighting Railroad

 Subscribe 293

71,665 views

## [Track Lighting Railroad](#)

A really different way to run a model railroad!



Model train leaving kitchen



Track Lighting Railroad



293

8,574 views

## [Long Train on Track Lighting Railroad](#)

Running a really long, long train from the kitchen and around the room on a Track Lighting Railroad.





Union Pacific Steam Shop Tour and Big Boy 4014 Restoration



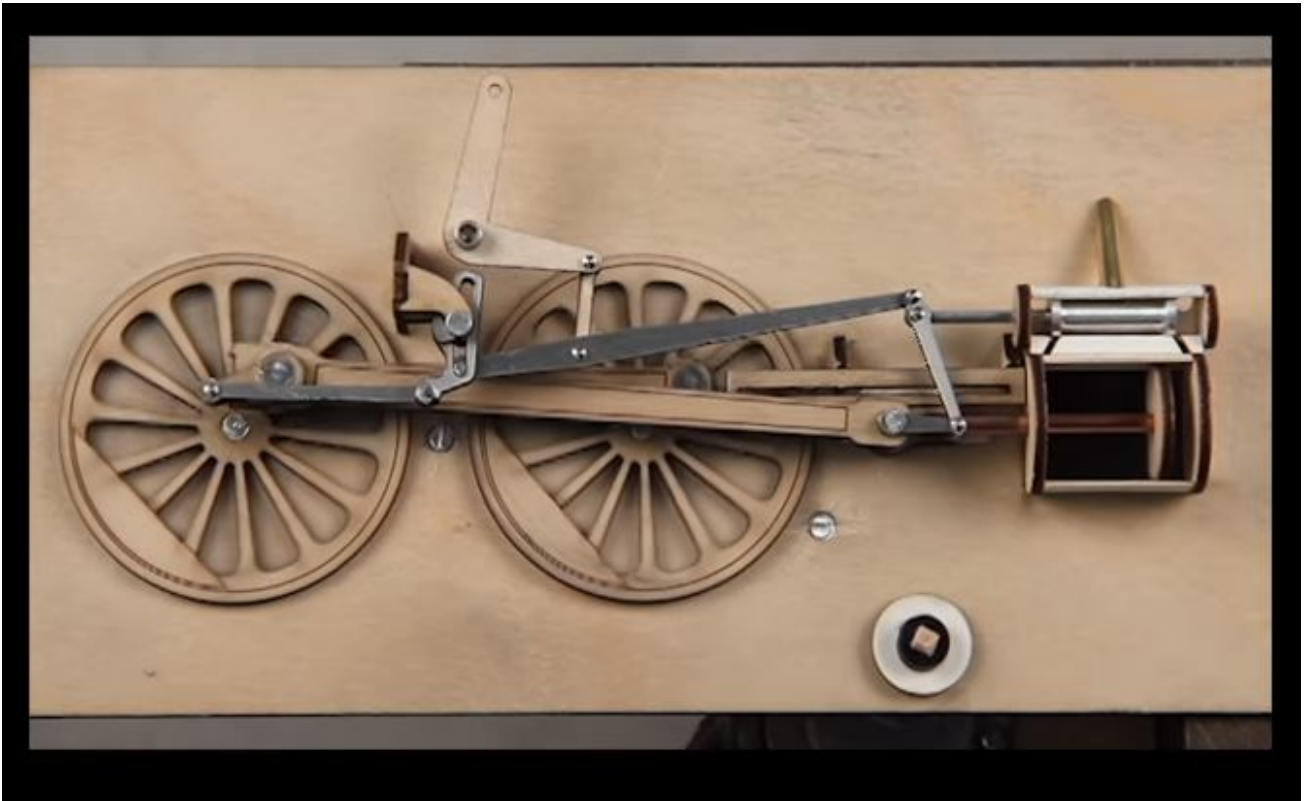
Bill Rogers



95,622 views

## [Union Pacific Steam Shop Tour](#)

The American Institute of Organbuilders were given a tour of both the Union Pacific's Steam Shop and the Roundhouse.



## [Walshaerts Valve Gear Explained](#)

Using a model, the presenter gives a clear explanation of how the Walshaerts Valve Gear linkage works on a steam locomotive.



Simply 7/8ths 'Dennis' at the Dingle Leigh Railway



Summerlandsteam

 Subscribe 1.5K

6,068 views

## [Picturesque Garden Railway](#)

Live steam garden railway with many scratchbuilt structures.



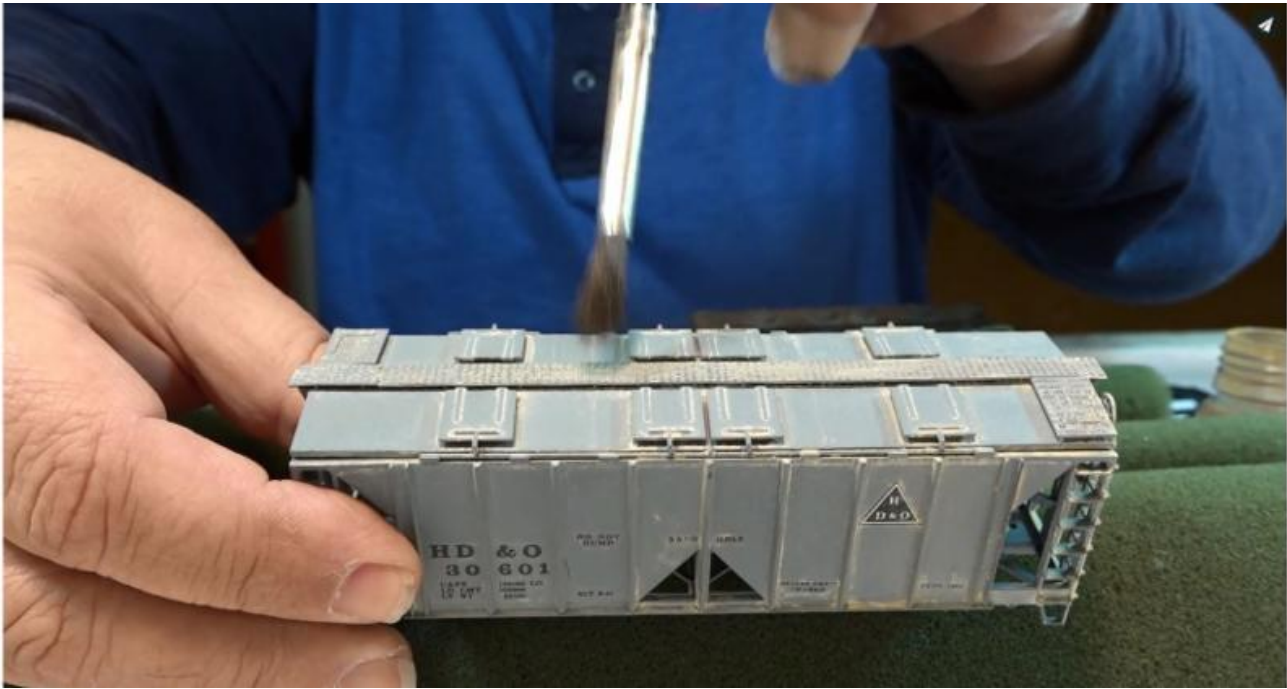
How To Fire Up a Steam Locomotive [4K]

## [How To Fire Up a Steam Loco](#)

In this video the presenter shows the the many steps of the long process of how an actual coal burning Denver & Rio Grande Western steam locomotive is fired up. The video compresses seven hours into an interesting 37 minute long video.

Z

**From Our Friends at Micro Mark**



## [Weathering with Vallejo Dry Pigments](#)

Bob Nalbone demonstrates his technique for weathering freight cars using Vallejo dry pigments and acrylic paint.

### [Division Business Car](#)



your portal to more fun in scale model railroading



Home In The News Education Standards Regions Conventions Calendar Membership Contact

## NMRA@Home

### Building a M.A.C. Gas Rail Car

Featured in the *Division Business Car* Column appearing in the June, 2018 issue of the NMRA Magazine

A 3 part article on how to build on a free-lanced On30 gas railcar

[Click for part 1](#)

[Click for part 2](#)

[Click for part 3](#)



GET STARTED

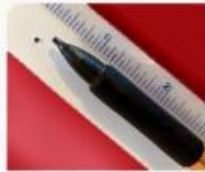
WITH MODEL RAILROADING

JOIN NOW

BECOME AN NMRA MEMBER

DONATE TODAY

EVERY GIFT HELPS



### Magnetic Point Locks in HO

Featured in the *Division Business Car* Column appearing in the June, 2018 issue of the NMRA Magazine

How to latch turnout points to the stock rail without resorting to powered switch throws

[Click for related article](#)

## [Division Business Car](#)

The *Division Business Car* column appears in even-numbered months in NMRA Magazine. It's loaded with great modeling ideas, plus useful information that can help make your Division, Region or 100% NMRA Club even better. The information comes from articles published in Region, Division, and club newsletters. The best of these articles are posted on the NMRA website. You can read the entire archive, from as far back as 2011 right up to the latest posting, by clicking [here](#).

Don't forget to visit the [Partnership Program](#) page on our website to get great deals and discounts!

Previous issues of the *NMRA Turntable* are available on the Turntable Archives page. You must first log in as a member at: [nmra.org](http://nmra.org) After you are in the members-only section, then hover over Publications on the menu bar, then *NMRA Turntable*, and then click on one of the list of back issues.

Editor: [Paul V. Voelker](#)

Contributing Editors: Tom Bensberg and Philip Sharp

Executive Editor: [Gerry Leone](#), [MMR](#), [HLM](#)

*The NMRA Turntable is an official monthly production of the National Model Railroad Association, Inc. Publishing Department (Don Phillips, Manager). Its purpose is to introduce NMRA members to a selection of instructional videos and online publications that they may find of interest. If you know of an NMRA member who is not receiving this mailing, please direct them to [here](#) to update their email address. If you no longer wish to receive these mailings, please don't mark them as SPAM. Instead, click the Safe Unsubscribe link at the bottom of this page. ©2017 National Model Railroad Association, Inc., P.O. Box 1328, Soddy Daisy TN 37384.*

STAY CONNECTED:

